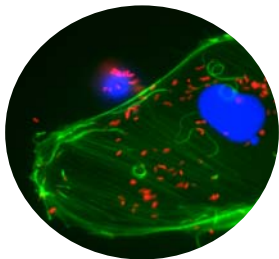
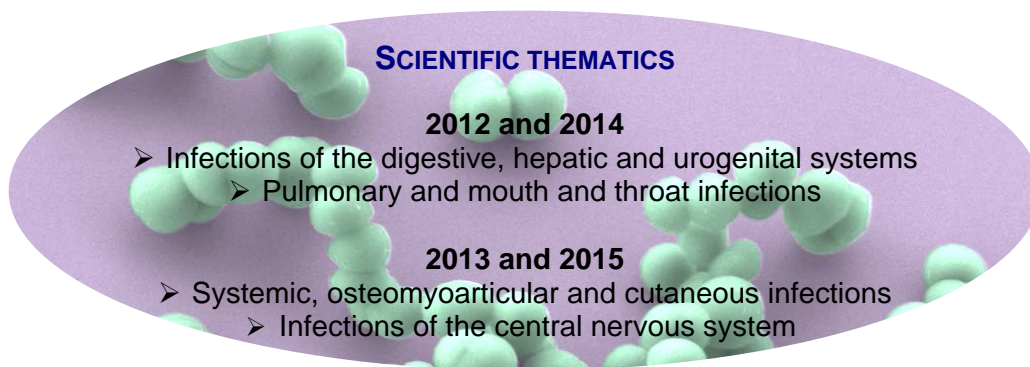


HUMAN INFECTIOUS DISEASES: Mechanisms, Risks and Impact on Society

- Infections diseases are major issues in terms of public health, scientific knowledge and medical investigation. Furthermore, they are increasingly becoming economic and social issues.
- Île-de-France, with more than 12 million inhabitants living, working and going about their leisure activities in the very diverse zones of the region, must pay particular attention to the surveillance, prevention and treatment of infectious risks.

The Malinf DIM aims to federate the activities of researchers and lecturer-researchers in the Ile-de-France region involved in the surveillance, epidemiology, diagnosis, prevention and treatment of infectious diseases and in studies of the microorganisms (bacteria, fungi, parasites, viruses and prions) causing them.



REGIONAL INTEREST

- Structuring nature of collaborative projects
- Favors the sharing of resources
- Federates different disciplines around the axes of research supported
- Contributes to excellence in research in Ile-de-France
- Increases the national and international standing of the Ile-de-France region

GOVERNANCE

The Malinf DIM has the legal status of a “scientific interest group” (groupement d’intérêt scientifique or GIS), with three administrative bodies:

- An administrative board (Conseil d’Administration, CA),
- A scientific council (Comité de Conseil Scientifique, CS),
- An enlarged scientific council (Conseil Scientifique Elargi, CSE).

13 PARTNERS :

ANSES AP-HP CEA CNRS
 ENVA INRA Inserm Institut Pasteur
 5 Universities :
 Paris V, Paris VI, Paris VII, Paris XI et UVSQ

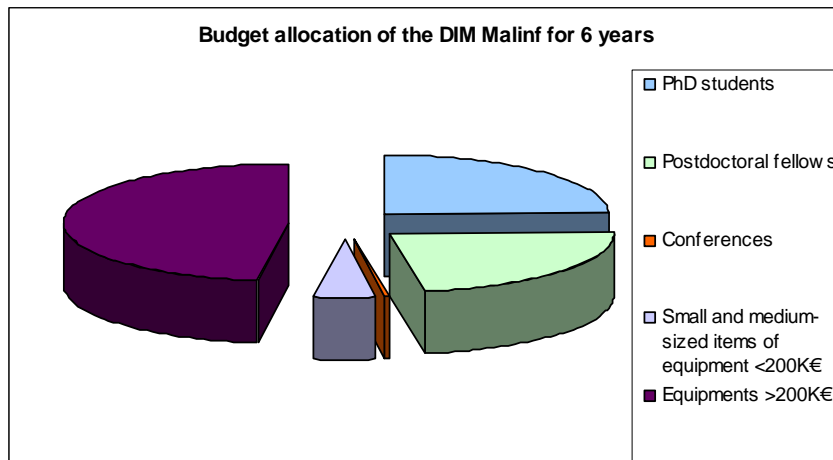
DIMs Website (Conseil Régional d’Ile de France) :
<http://www.iledefrance.fr/action-quotidienne/encourager-recherche>

Malinf DIM Website : <http://www.dim-malinf.org>
 Email : dim-malinf@pasteur.fr



TYPES OF ACTION SUPPORTED

- Collaborative projects involving two or three teams from Ile de France, which share their two research grants and small and medium-sized items of equipment (< €200,000)
- Moderately heavy and heavy equipment (> €200,000)
- The organization of scientific meetings and events



ACTIONS CARRIED OUT

- 186 research laboratories supported since 2008
- 108 PhD students/postdoctoral fellows funded
 - 103 publications in international journals
 - 9 patent applications filed
 - 1 company set up as a spin-off from a supported project
- 14 international conferences that have already taken place, attended by more than 3000 scientists
- Equipment:
 - Equipping eight hospital sites with mass spectrometers
 - Animal houses of the CEA, ENVA and INRA
 - The Dynamic Imaging Platform at Institut Pasteur
 - The "Next-Generation" Sequencing Platform at Paris-Est/Créteil University

DISEASES FOR WHICH THE MALINF DIM HAS SUPPORTED RESEARCH PROJECTS:

VIRAL INFECTIONS

Flu
Chikungunya
Poliomyelitis
Hepatitis E

PARASITIC INFECTIONS

Malaria
Toxoplasmosis
Leishmaniasis
Trypanosome infections

BACTERIAL AND FUNGUS INFECTIONS

Legionellosis
Whooping cough
Tuberculosis
Leprosy
Leptospirosis
Candidiasis
Bacterial meningitis and prion encephalopathies

CANCERS OF INFECTIOUS ORIGIN

